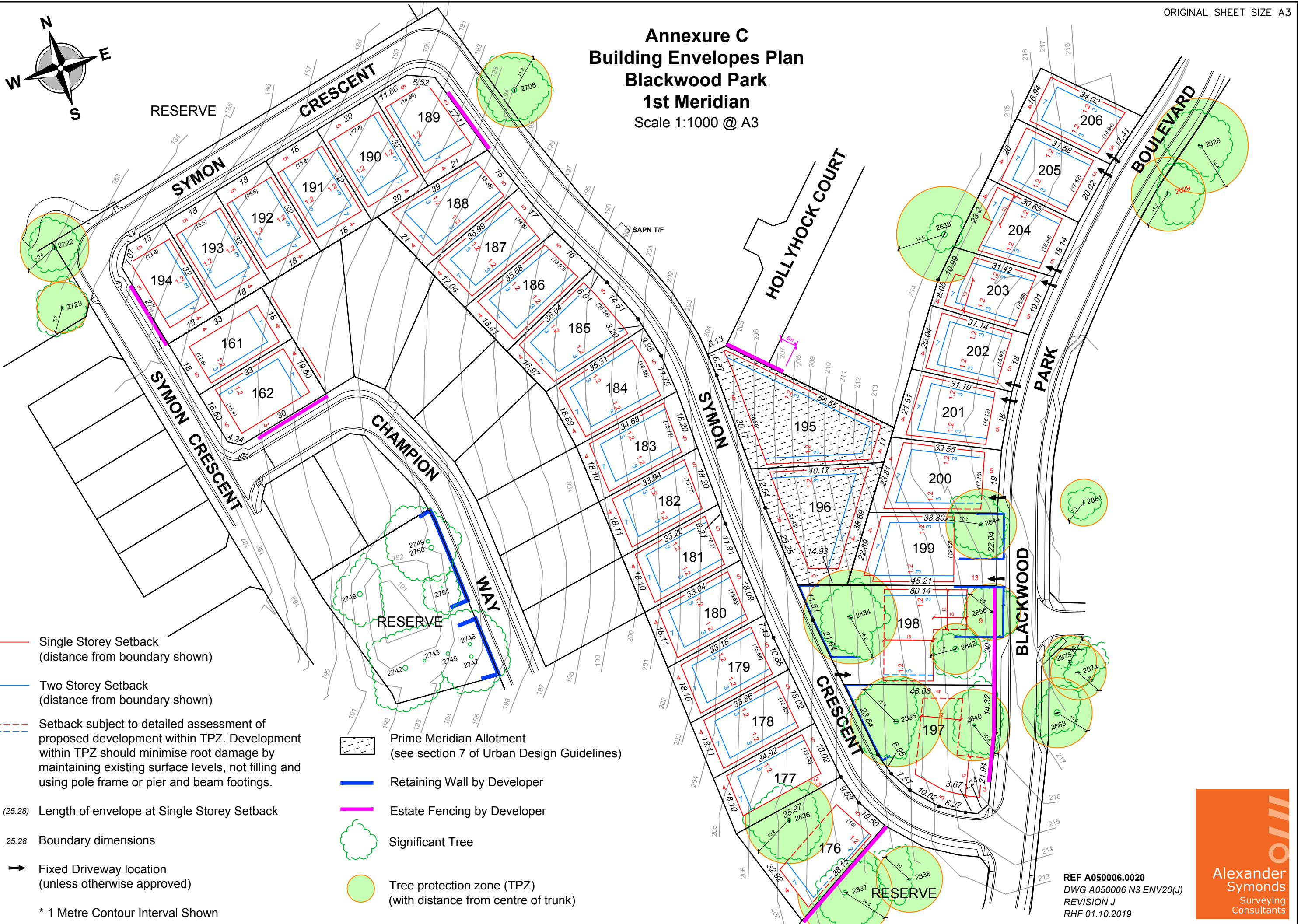


# Annexure C Building Envelopes Plan Blackwood Park 1st Meridian Scale 1:1000 @ A3



- Single Storey Setback  
(distance from boundary shown)
- Two Storey Setback  
(distance from boundary shown)
- Setback subject to detailed assessment of  
proposed development within TPZ. Development  
within TPZ should minimise root damage by  
maintaining existing surface levels, not filling and  
using pole frame or pier and beam footings.
- (25.28) Length of envelope at Single Storey Setback
- 25.28 Boundary dimensions
- ➔ Fixed Driveway location  
(unless otherwise approved)
- \* 1 Metre Contour Interval Shown

- Prime Meridian Allotment  
(see section 7 of Urban Design Guidelines)
- Retaining Wall by Developer
- Estate Fencing by Developer
- ⊕ Significant Tree
- Tree protection zone (TPZ)  
(with distance from centre of trunk)

REF A050006.0020  
DWG A050006 N3 ENV20(J)  
REVISION J  
RHF 01.10.2019

