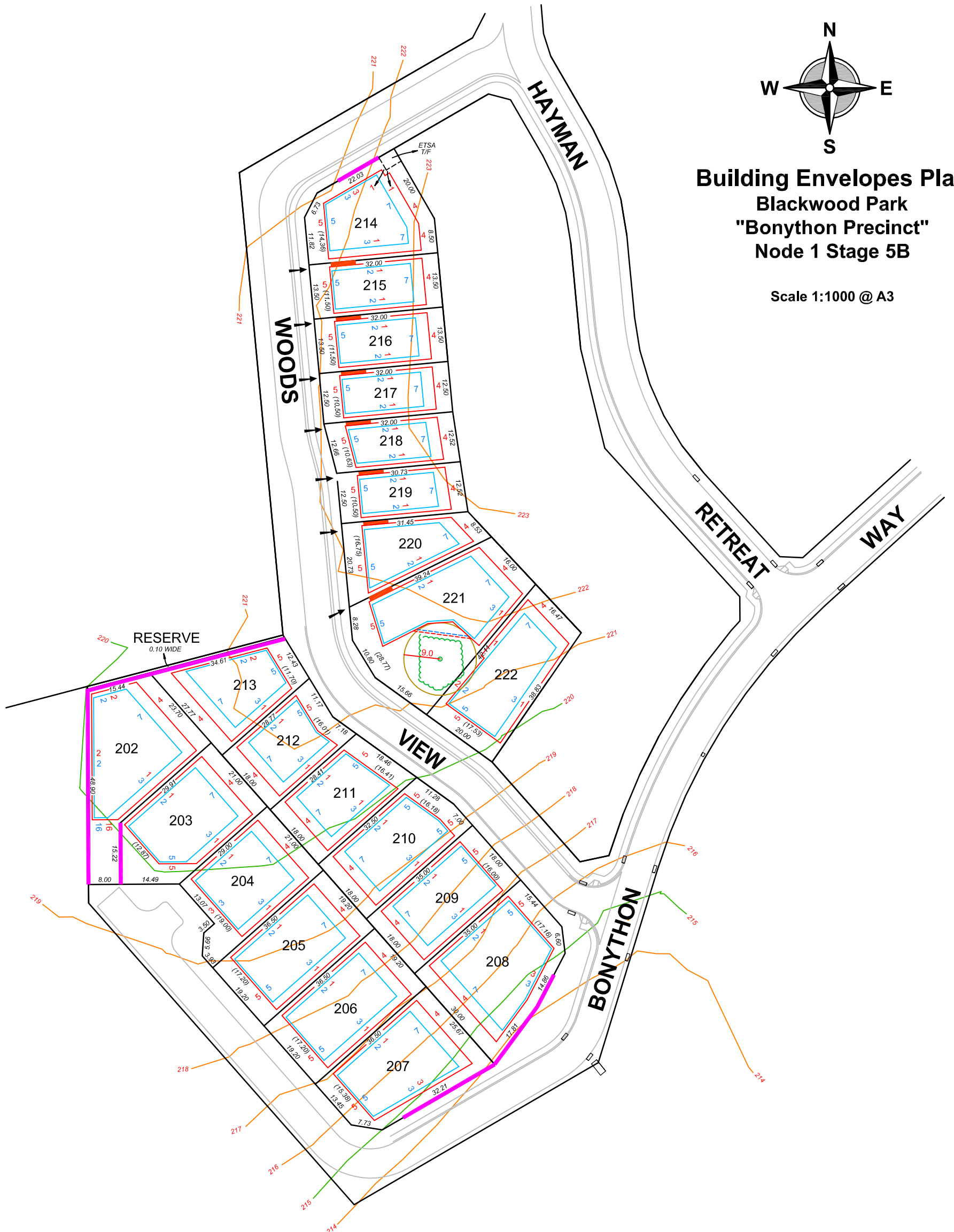


**Building Envelopes Plan  
Blackwood Park  
"Bonython Precinct"  
Node 1 Stage 5B**

Scale 1:1000 @ A3



Allotments 202, 203, 204, 205, 206, 207, 208 are to have dwellings with a total floor area greater than 350m<sup>2</sup> and comply with special specific provisions (refer Section 7 of the Blackwood Park Urban Design Guidelines)

Allotments 215, 216, 217, 218, 219, 220 are designated two storey dwellings

Tree protection zone (with setback from trunk)

Setback subject to detailed assessment of proposed development within tree protection zone

\* 1 Metre Contour Interval Shown

- Estate fencing by developer
- Single Storey Setback (distance from boundary shown)
- Two Storey Setback (distance from boundary shown)
- Denotes Garage can be built on boundary (minimum 5.5m from frontage)
- Fix Driveway Location (unless otherwise approved)
- (25.28) Length of frontage at Single Storey Setback
- 25.28 Boundary dimensions

REF A050006  
DWG No. A050006 N1 ENV5B  
REVISION A  
PAP 28.09.09

