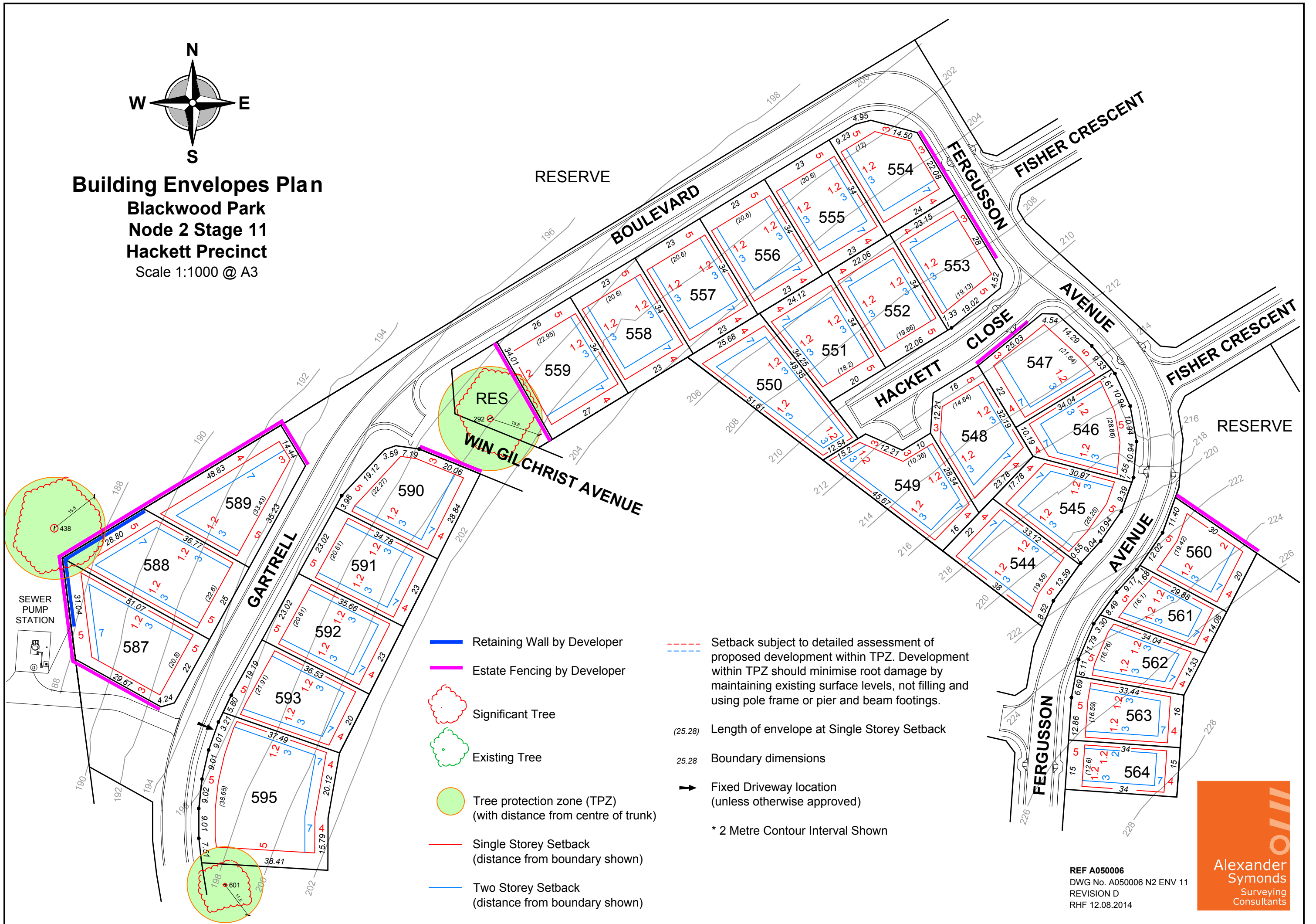


**Building Envelopes Plan**  
**Blackwood Park**  
**Node 2 Stage 11**  
**Hackett Precinct**  
 Scale 1:1000 @ A3



- Retaining Wall by Developer
- Estate Fencing by Developer
- Significant Tree
- Existing Tree
- Tree protection zone (TPZ) (with distance from centre of trunk)
- Single Storey Setback (distance from boundary shown)
- Two Storey Setback (distance from boundary shown)
- Setback subject to detailed assessment of proposed development within TPZ. Development within TPZ should minimise root damage by maintaining existing surface levels, not filling and using pole frame or pier and beam footings.
- (25.28) Length of envelope at Single Storey Setback
- 25.28 Boundary dimensions
- Fixed Driveway location (unless otherwise approved)
- \* 2 Metre Contour Interval Shown

REF A050006  
 DWG No. A050006 N2 ENV 11  
 REVISION D  
 RHF 12.08.2014

