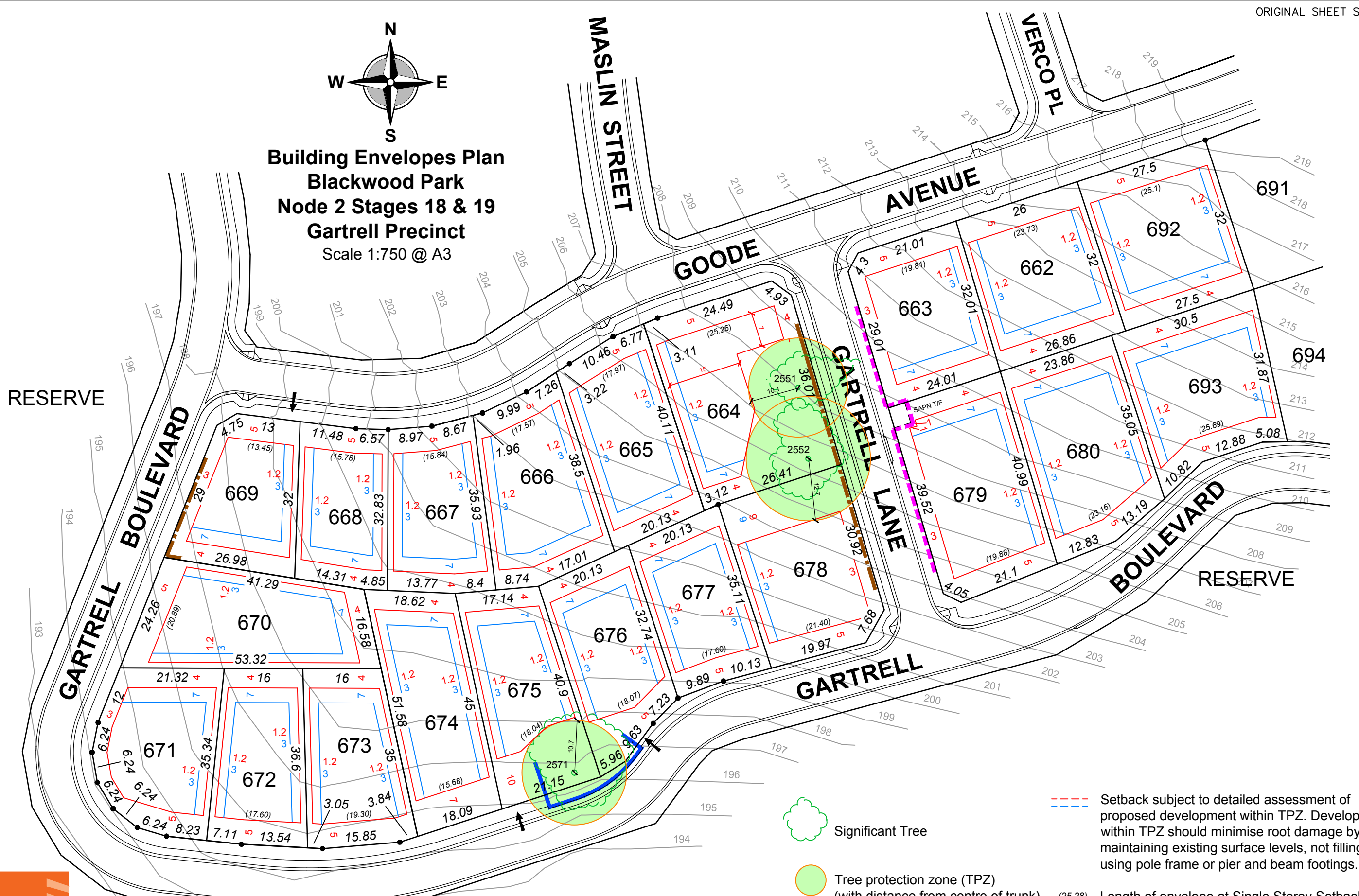


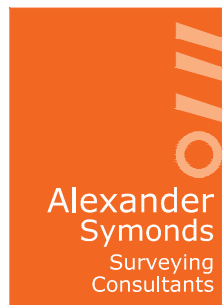
Building Envelopes Plan
Blackwood Park
Node 2 Stages 18 & 19
Gartrell Precinct
 Scale 1:750 @ A3

RESERVE

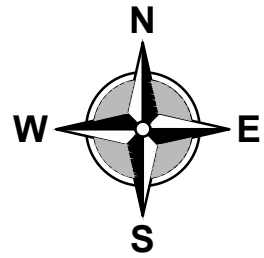
RESERVE



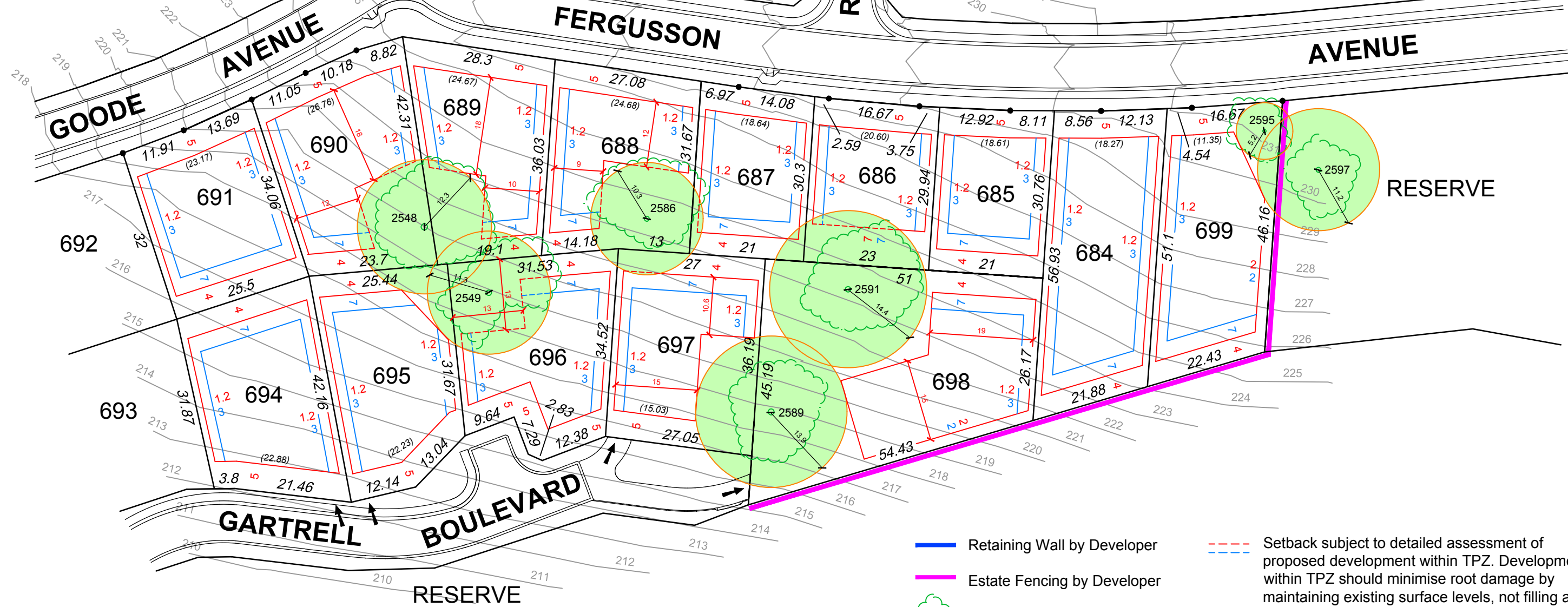
- Significant Tree
- Tree protection zone (TPZ) (with distance from centre of trunk)
- Setback subject to detailed assessment of proposed development within TPZ. Development within TPZ should minimise root damage by maintaining existing surface levels, not filling and using pole frame or pier and beam footings.
- Single Storey Setback (distance from boundary shown)
- Two Storey Setback (distance from boundary shown)
- Retaining Wall & Estate Fencing by Developer
- Retaining Wall by Developer
- Estate Fencing by Developer
- (25.28) Length of envelope at Single Storey Setback
- 25.28 Boundary dimensions
- Fixed Driveway location (unless otherwise approved)
- * 1 Metre Contour Interval Shown



REF A050006
 DWG No. A050006 N2 ENV18(B)
 REVISION B
 RHF 15.04.2016



Building envelopes Plan
Blackwood Park
Node 2 Stages 18 & 19
Gartrell Precinct
 Scale 1:750 @ A3



- Retaining Wall by Developer
- Estate Fencing by Developer
- Significant Tree
- Tree protection zone (TPZ) (with distance from centre of trunk)
- - - Single Storey Setback (distance from boundary shown)
- - - Two Storey Setback (distance from boundary shown)
- - - Setback subject to detailed assessment of proposed development within TPZ. Development within TPZ should minimise root damage by maintaining existing surface levels, not filling and using pole frame or pier and beam footings.
- (25.28) Length of envelope at Single Storey Setback
- 25.28 Boundary dimensions
- Fixed Driveway location (unless otherwise approved)
- * 1 Metre Contour Interval Shown



REF A050006
 DWG No. A050006 N2 ENV19(C)
 REVISION C
 RHF 13.05.2019