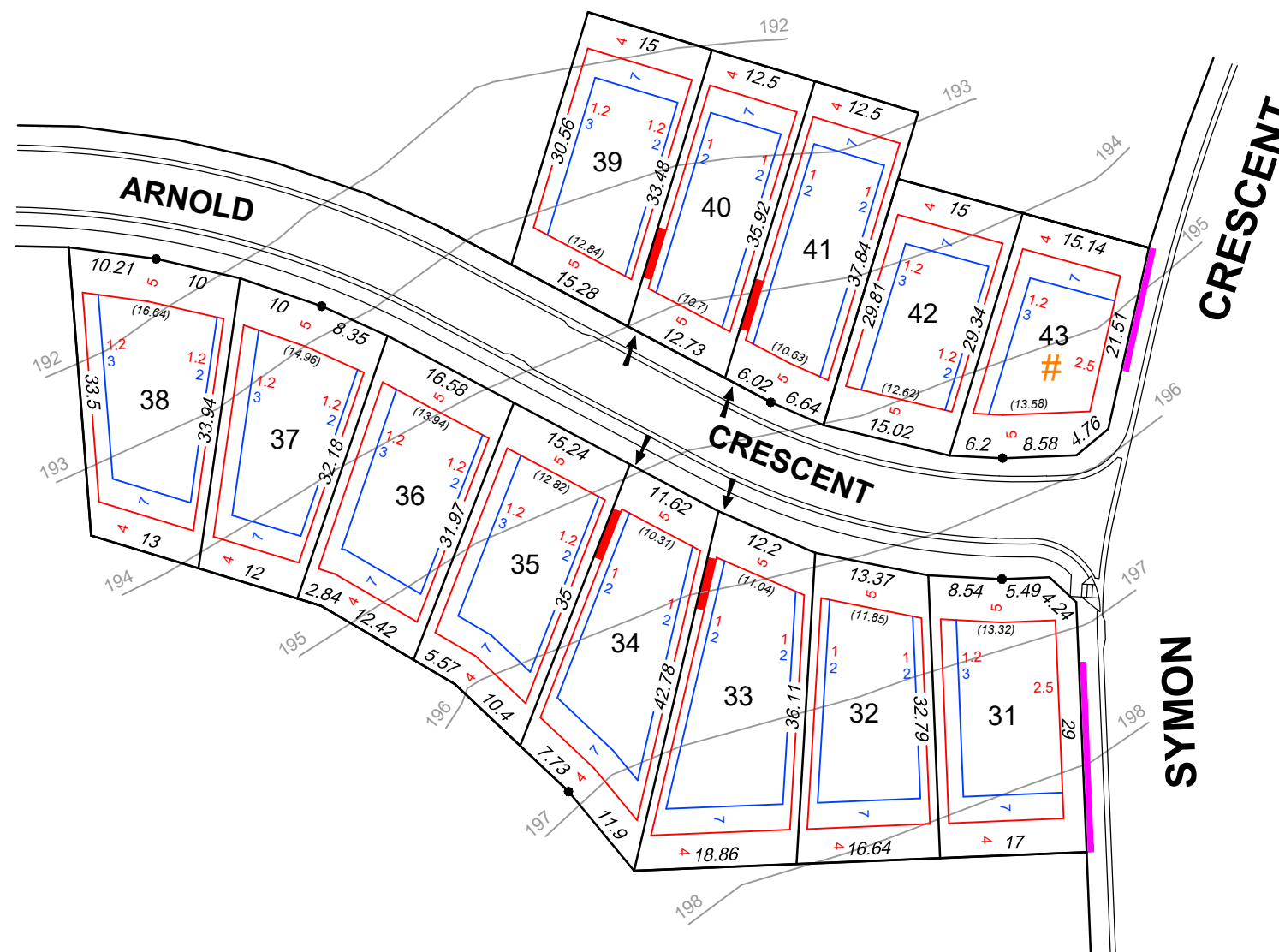


Annexure C Building Envelopes Plan Blackwood Park 10th Meridian Scale 1:750 @ A3

- Single Storey Setback
(distance from boundary shown)
- Two Storey Setback
(distance from boundary shown)
- Setback subject to detailed assessment of proposed development within TPZ. Development within TPZ should minimise root damage by maintaining existing surface levels, not filling and using pole frame or pier and beam footings.
- # Mandatory two storey dwelling.
- (25.28) Length of envelope at Single Storey Setback
- 25.28 Boundary dimensions
- ➔ Fixed Driveway location
(unless otherwise approved)
- * 1 Metre Contour Interval Shown
- Prime Meridian Allotment
(see section 7 of Urban Design Guidelines)
- Retaining Wall by Developer
- Estate Fencing by Developer
- Significant Tree
- Tree protection zone (TPZ)
(with distance from centre of trunk)
- | — Denotes Garage can be built on boundary (minimum 5.5m from frontage)



REF A050006.0027
DWG A050006 N3 ENV27(C)
REVISION C
RHF 20.10.2020

